

Beast III Cable Management and Labeling Unit™

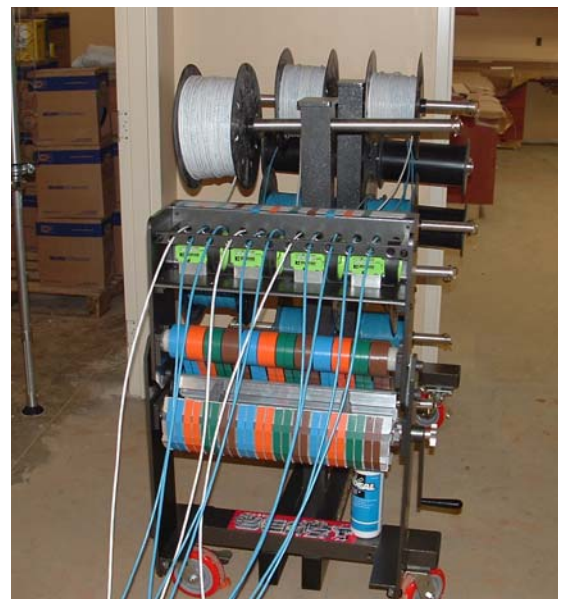
**Now only
\$4995**

Description

The Beast III is our portable Cable Management and Labeling Systems and has all the same functions and benefits as the Beast I and Beast II. Its portable design makes it ideal for MACs and for installations where there are numerous Telco Rooms within the facility such as: stadium complexes, hospitals, universities and other campus environments.

Key Benefits & Functions

- Self Contained Design for Easy Transport to Job Site
- Quick, Secure and Flexible Job Set-Up
- System is mobile even when loaded with cable
- Supports Boxes and 1k – 3k Ft Spools
- Scalable Cable Capacity up to 24,000 Ft
- Guide hole design separates cables and keeps kinks out of pathways
- Extra Hand™ Cable Holder Maintains Order
- Labeling Work Station Provides Fast, Accurate, and Neat Labeling
- Waist High Ergonomic Design Reduces Technician Fatigue
- Built-in Metering Design Slashes Waste



The Beast III is part of the overall Beast Cabling System CIS that includes The WireWolf Pathway Guide and Patch Panel Organizer™ and the Claw Anti-Twist and Tensile Pressure Equalizer™.

Specifications

- Capable of supporting up to 12 typical sized 1,000' reels/8 typical sized 3,000' reels
- Includes rack conversion kit for supporting 12- 1000' Boxes
- Continuously deploys colored labeling tape to create 24 rough-in labels at a time
- Includes 3 upright support stanchions and 4- linear meters.
- Manufactured out of rugged aluminum making it virtually indestructible
- Can fit through standard doorways even when loaded w/cable
- Completely self contained and requires no tools for setup
- Easily transportable in any standard cargo van or pick-up truck
- Dimensions: 60.0" D X 31.0" W X 61.0" H" (Operating)
60.0" D X 31.0" W X 26.0" H" (Transport Ready)