

## Beast II Cable Management and Labeling Unit™

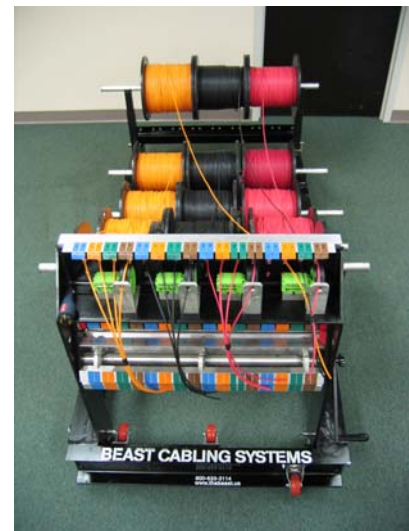
**Now only  
\$4995**

### Description

The Beast II is our mid-sized Cable Management and Labeling System. It is well suited for use on data center installations and other projects that call for a large number of drops. Its flexible design easily adapts to fit almost any size job making it an invaluable asset to any installation crew.

### Key Benefits & Functions

- Self Contained Design for Easy Transport to Job Site
- Quick, Secure and Flexible Job Set-Up
- Supports Boxes and 1k – 3k Ft Spools
- Scalable Capacity up to 32,000 Ft
- Guide hole design separates cables and keeps kinks out of pathways
- Extra Hand™ Cable Holder Maintains Order
- Labeling Work Station Provides Fast, Accurate, and Neat Labeling
- Waist High Ergonomic Design Reduces Technician Fatigue
- Built-in Metering Design Slashes Waste



The Beast II is part of the overall Beast Cabling System CIS that includes The WireWolf Pathway Guide and Patch Panel Organizer™ and the Claw Anti-Twist and Tensile Pressure Equalizer™.

### Specifications

- Capable of supporting up to 32 typical sized 1,000' reels/8 typical sized 3,000' reels
- Continuously deploys colored labeling tape to create 32 rough-in labels at a time
- Equipped with 6– 4", 4– 8" and 4- adjustable stanchions ( adjust 14"-20"), 7– 48" axels and
- 4- linear meters
- Manufactured out of rugged aluminum making it virtually indestructible
- Completely self contained, requires no tools for setup
- Two dual wheel assemblies allows units to be rolled into place by 1 worker
- Easily transportable in any standard cargo van or pick-up truck
- Dimensions: 85.0" L X 40.25" W X 41.5" H (fully extended)  
55.5" L X 40.25" W X 41.5" H (short extension)  
10.0" D X 40.25" W X 56.5" H (transport ready)